



### Service & Help

Contact the place of purchase or a Pacvac distributor or service agent.

For details of your nearest Pacvac distributor/service agent contact Pacvac on 08 9479 1444

Revised: July 2009

Support: 08 9479 1444

Please read information manual carefully.  
Retain for future reference.



## *Glide 300*

Commercial Canister Vacuum Cleaner

Support: 08 9479 1444

Please read information manual carefully.  
Retain for future reference.

[www.pacvac.com](http://www.pacvac.com)

Instruction Manual



## Warranty

Pacvac Pty Ltd warrants all machines and their components which are wholly of their manufacture against faulty material and /or workmanship for a period of 2 years and 1 year on the motor from the date of purchase to the original user and subject to the following conditions:

1. In the case of proprietary components used by Pacvac such as electric motors, switches and the like, Pacvac will pass on a 1 year warranty given by the original manufacturer.
2. This warranty shall not apply to any part of a machine which is expendable, such as but not limited to hoses, electrical lead, carbon brushes, floor tools, bags and filters.
3. No warranty shall apply to any machine or component that has been altered, abused, neglected or modified in any way. Only genuine Pacvac components to be used.  
The Company reserves the right to repair or replace parts claimed as faulty at its discretion.
4. The placing upon a Pacvac machine of any attachment or equipment not manufactured or sold by the Company or authorised by it, shall void any warranty.
5. Pacvac shall not in any event be liable for any consequent or contingent loss or damage whatsoever.
6. Labour on any warranty will be covered within the first 12 months. Labour costs on claims after 12 months will be the purchaser's responsibility.
7. Warranty repairs can only be carried out by an authorised Distributor or Service Agent who is a licenced Electrical Contractor and freight costs will be the purchaser's responsibility.

## Contents

Important Safety Instructions.....	Page 2
Parts Overview Diagram.....	Page 3
Assemble Instructions.....	Page 4
Operation Instructions.....	Page 4
Accessories.....	Page 5
Maintenance Instructions.....	Page 6
Clearing Blockages.....	Page 8
Technical Specification.....	Page 8
Troubleshooting.....	Page 8
Glide 300 Parts Profile.....	Page 9

### 1. Important Safety Instructions

#### For Commercial and Domestic use.

1. Read the Product Manual before using the vacuum cleaner and always follow the Safety and Maintenance Instructions.
2. Do not unplug the vacuum cleaner while it is turned on. Turn the switch OFF – then unplug.
3. Always unplug the vacuum cleaner before connecting or disconnecting the hose.
4. Do not leave the vacuum cleaner when plugged in. Unplug from the power point when not in use and before servicing.
5. The vacuum cleaner is for dry use only. Do not use outdoors or in wet conditions.
6. Use only the Manufacturer's recommended attachments.
7. Do not restrict the vacuum cleaner's airflow. Maintain the vacuum cleaner regularly so that all openings are free of dust, lint, hair or anything else which may affect airflow. Refer to the Maintenance Instructions in this Product Manual.
8. Regularly check the power cord for damage, such as cuts, abrasions, exposed wiring or aging. If the power cord or plug is damaged, the complete power cord must be replaced by your local Authorised Pacvac Service Agent in order to avoid a hazard. Only replace the power cord with the same specifications.
9. If the vacuum cleaner has been dropped, damaged, left outdoors or dropped into water, return it to your local Authorised Pacvac Service Agent for a safety check.
10. Do not unplug the power cord by pulling on the power cord only. To unplug, grasp the plug and pull gently.
11. Do not pull or carry by the power cord. Avoid closing the door on the power cord and pulling the cord around sharp edges or corners. Avoid running the vacuum cleaner over the power cord. Keep the power cord away from heated surfaces.
12. Do not handle the vacuum cleaner, power cord or plug with wet hands.

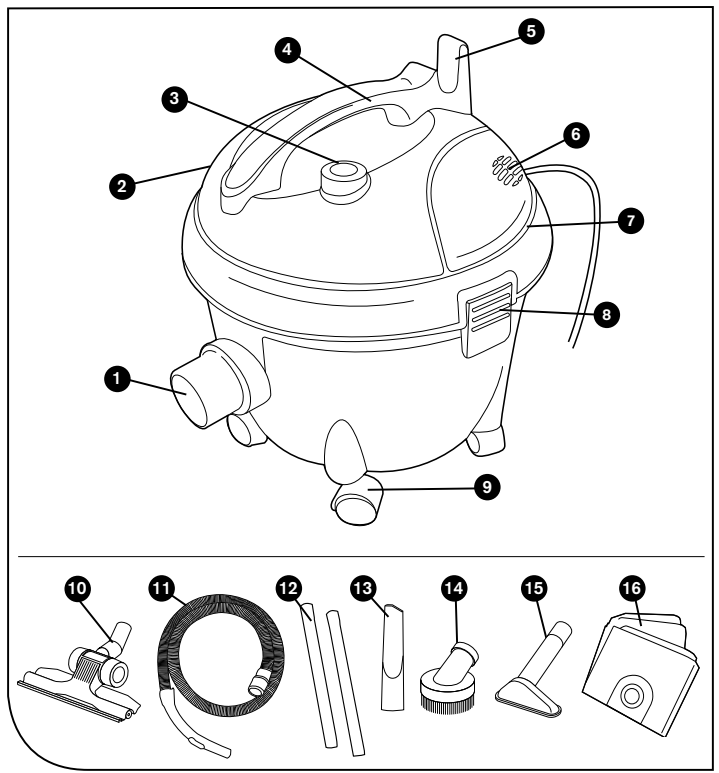
13. Do not use the vacuum cleaner to pick up flammable or combustible liquids, such as petrol etc., and do not use in areas where they may be present.
14. This vacuum cleaner is not suitable for picking up hazardous dust (Pacvac are able to provide specific equipment for this use).
15. Do not vacuum anything that is burning or smoking such as cigarettes or hot ashes.
16. Do not vacuum up hard or sharp objects (glass, nails, screws etc).
17. Do not use the vacuum cleaner without filters in place.
18. Store the vacuum cleaner indoors. Put away after use to prevent tripping accidents.
19. This vacuum cleaner is not intended for use by persons (including children) with reduced physical, sensory or mental capabilities, or lack of experience and knowledge, unless they have been given supervision or instruction concerning use of the back pack by a person responsible for their safety. Children should be supervised to ensure that they do not play with the vacuum cleaner.
20. Keep hair, loose clothing, fingers and all parts of the body away from moving parts and openings.
21. Take extra care if using this vacuum cleaner to vacuum stairs.
22. Store the vacuum cleaner in a cool, dry area indoors.

#### RETAIN THESE SAFETY INSTRUCTIONS FOR FURTHER USE.

#### Motor Thermostat

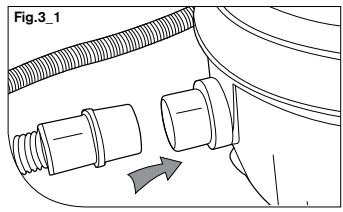
**IMPORTANT:** The motor is equipped with a thermal cut-out. If for any reason, the vacuum cleaner should over-heat, the thermostat will automatically turn the unit off. Should this occur, unplug the vacuum cleaner from the electrical outlet and turn off the switch. Remove the dirt container and empty. Clean the filters. Allow the cleaner to cool for approximately 30 minutes. To re-start, plug into a power point and switch back on.

### 2. Parts Overview

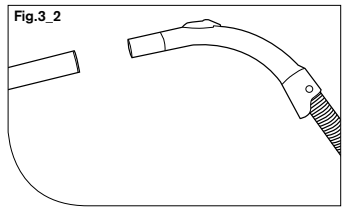


- |                            |                            |                                   |
|----------------------------|----------------------------|-----------------------------------|
| 1. Hose Inlet              | 7. Parking Slot            | 13. Crevice Tool                  |
| 2. Top Cover               | 8. Retainer Clips          | 14. Dusting Brush                 |
| 3. On/Off Button           | 9. 360° Rotating Castors   | 15. Upholstery Tool               |
| 4. Carry Handle            | 10. Combination Floor Tool | 16. Disposable/Reusable Bags (x5) |
| 5. Power Cord Storage Hook | 11. Flexible Hose          |                                   |
| 6. Safety Bleed Valve      | 12. Wand (x2)              |                                   |

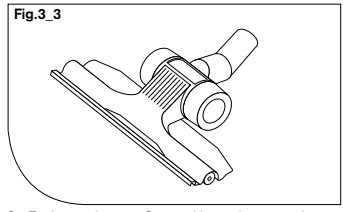
### 3. Assemble Instructions



1. Insert the flexible hose into the inlet on the main body of the vacuum cleaner. Turn the hose clockwise until it cannot be turned any further (Fig.3\_1).

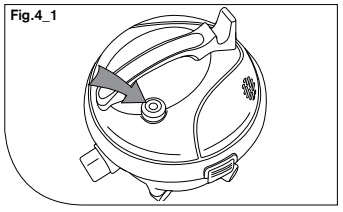


2. Push the wand on to the end of the handle. The wands can be used together to lengthen or shorten by using one section of the wand as required.(Fig.3\_2).

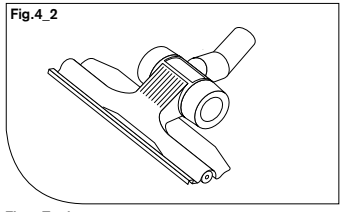


3. Fit the combination floor tool by pushing onto the wand. (Fig.3\_3).

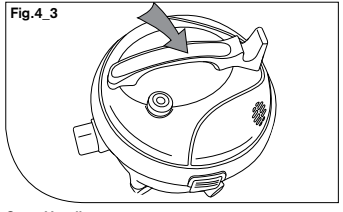
### 4. Operation Instructions



**On/Off Button**  
Insert the power plug into the power point. Ensure the vacuum cleaner is switched off. Press the on/off button located on the top of the machine to turn on and press the button again to turn the vacuum cleaner off. (Fig.4\_1)

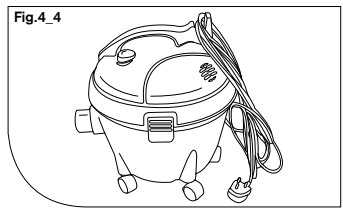


**Floor Tool**  
The Floor Tool supplied can be used on carpets and hard floors. (Fig.4\_2)

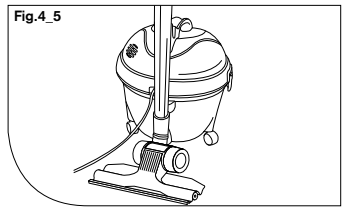


**Carry Handle**  
Use the carry handle located on the top of the machine to move the vacuum cleaner from room to room. (Fig.4\_3)

### 4. Operation Instructions (Cont'd)



**Cable Storage**  
After use, turn the vacuum cleaner off and unplug from the power point. Wrap the cord around the cable storage hook for moving the unit from room to room or for storage. (Fig.4\_4)



**Hose Storage**  
For convenience there is a parking slot located at the rear of the vacuum cleaner, where the wand may be parked for carrying and storage. (Fig.4\_5)

### 5. Accessories

The accessories can be attached directly to the handle by removing the wand and pushing in the desired accessory.

The accessories can also be attached to the wand for extra reach. Remove the combination floor tool and push on the desired accessory.

**Crevice Tool**  
For crevices, corners, cracks etc.



**Dusting Brush**  
For delicate surfaces.



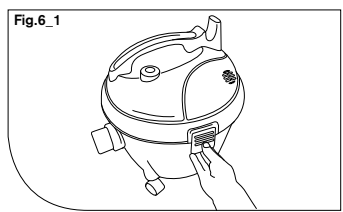
**Upholstery Tool**  
For sofas, chairs etc.



### 6. Maintenance Instructions

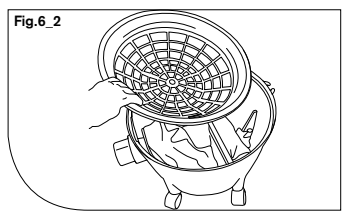
**IMPORTANT:** Always unplug the vacuum cleaner from the electrical outlet before removing the dust bag.

**IMPORTANT:** DO NOT use the vacuum cleaner without ALL of the filters in place.

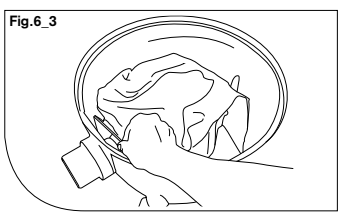


**Dust Bag Replacement**

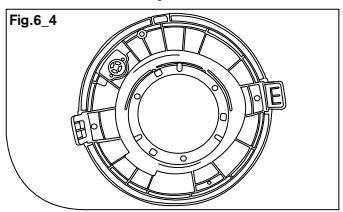
1. Turn off the vacuum cleaner and unplug it from the power point. Remove the hose and unclip the retainer clips on either side of the machine and remove the lid, by lifting from the handle. (Fig.6\_1)



2. Lift out the filter cage assemble, to access the dirt container compartment. (Fig.6\_2)

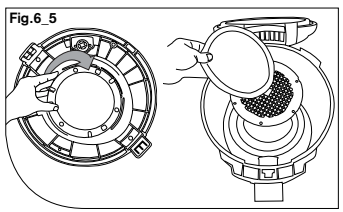


3. Remove the full dust bag and dispose. Insert a new dust bag by aligning the downward arrow on the front of the dust bag to the bottom of the container over the air entrance. **NOTE: The seal ring around the dust bag opening should cover the air entrance connector inside the housing.** (Fig.6\_3)



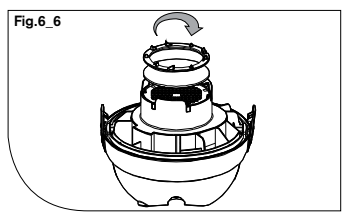
**Pre-motor Filter**

1. Turn off the vacuum cleaner and unplug it from the power point.
2. Unclip the retainer clips on either side of the vacuum cleaner and remove the lid. (Fig.6\_4)



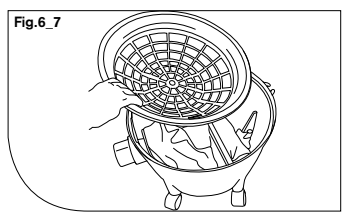
3. Rotate the filter-retaining disc clockwise to gain access to the filter, or HEPA filter, which can then be lifted out to remove (Fig.6\_5)

### 6. Maintenance Instructions (cont'd)



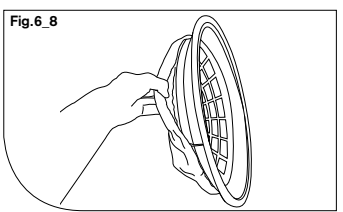
**NOTE: Pacvac recommends cleaning or replacing the pre-motor filter or HEPA filter should it become discoloured or dirty.**

4. The pre-motor filter must then be returned to the vacuum cleaner before use and the retaining disc turned clockwise to secure (Fig.6\_6)



**Filter cage assembly**

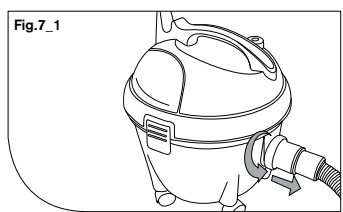
1. Turn off the vacuum cleaner and unplug it from the power point.
2. Unclip the retainer clips on either side of the vacuum cleaner and remove lid. Lift out the filter cage. The filter on the cage may be brushed to clean if dusty and replaced with a new filter when required. (Fig.6\_7)



3. The filter can then be removed from the cage by hand. It can be re-attached by putting on a new filter. The filter must then be attached to the cage before the vacuum cleaner is used. (Fig.6\_8)

**7. Clearing Blockages**

**NOTE:** Disconnect the power cord before maintenance, servicing and troubleshooting.



Turn vacuum cleaner off and disconnect the power plug from the power point.

The flexible hose can be disconnected from the vacuum cleaner by rotating anti-clockwise and pulling away from the machine. Remove any blockages found then reconnect the hose. (Fig. 7\_1)

**8. Technical Specification**

Voltage: 220-240V ~50Hz  
 Wattage: 1300W (max)  
 Noise: <74 dB(A)  
 Capacity: 15 litres  
 Filters: Foam pre-motor filter or HEPA filter  
 Microfiltration cage  
 Cord length: 18m  
 Weight: 5.81kg (dependant on model)

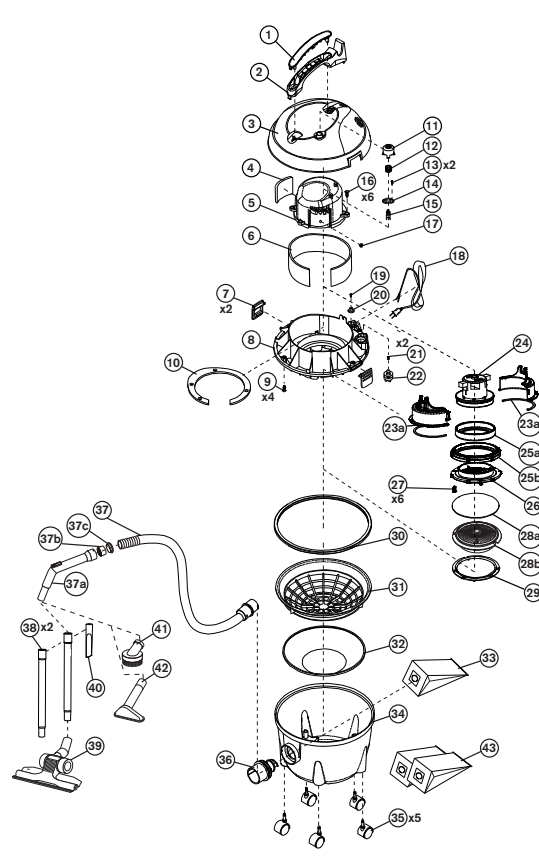
Subject to technical change without notice.

**9. Troubleshooting**

<b>PROBLEM: Vacuum Cleaner not working</b>	
<b>Cause:</b>	Power cord not firmly plugged into power point.
<b>Solution:</b>	Plug power cord into power point firmly.
<b>Cause:</b>	Vacuum cleaner not turned on.
<b>Solution:</b>	Press on/off button.
<b>Cause:</b>	Thermal protector shuts cleaner off due to high motor temperature.
<b>Solution:</b>	Turn main switch off and unplug the vacuum cleaner. Ensure the filters are clean. Inspect the wands, hose and floor tool and remove any blockages. After 30 minutes the vacuum cleaner should be ready for use. If not contact Pacvac for your nearest Authorised Pacvac Service Agent.
<b>Cause:</b>	Blown fuse / tripped breaker.
<b>Solution:</b>	Reset circuit breaker or replace fuse.

<b>PROBLEM: Vacuum Cleaner has no/poor suction</b>	
<b>Cause:</b>	Dust bag full.
<b>Solution:</b>	Remove, empty and clean dust bag.
<b>Cause:</b>	Dust bag not installed correctly.
<b>Solution:</b>	Remove and empty dust bag making sure the rubber edging is correctly fitted around the canister.
<b>Cause:</b>	Hose not installed correctly.
<b>Solution:</b>	Reconnect hose and ensure correctly sealed.
<b>Cause:</b>	Blockages.
<b>Solution:</b>	Remove hose, wand and floor tools; remove any blockages.
<b>Cause:</b>	Filters blocked.
<b>Solution:</b>	Clean filters.

**10. Glide Parts Profile**



<b>CD1501 BOM</b>		
No.	Part Name	Part No.
1.	Handle cover	G103
2.	Handle base	G105
3.	Top cover	G107
4.	Exhaust filter	G259
5.	Motor housing	G256
6.	Noise insulation	G254
7.	Latch	G131B
8.	Middle base	G115B
9.	Screw	G10
10.	Noise insulation	G255
11.	On/Off button	G261/2
12.	Spring	G435
13.	Screw	G11
14.	Switch pedal	G260
15.	Switch	G261
16.	Screw	G12
17.	2-hole stopple	G17
18.	Power cord assy	G108
19.	Screw	G13
20.	Pedal for power cord	G262
21.	Screw	G14
22.	Thermal cut-out	G01A
23a.	Right motor bracket	G276R
23b.	Left motor bracket	G276L
24.	Motor	G118
25a.	Motor gasket	G253
25b.	Motor housing gasket	G253B
26.	Air inlet grill	G26B
27.	Screw	G15
28a.	Motor filter	G522
28b.	HEPA filter	G288
Note: Part standard for Glide HEPA model or available as upgrade for standard Glide		
29.	Cuff for air inlet grill	G29
30.	Seal for SMS Filter	G126
31.	Retainer for SMS Filter	G127B
32.	SMS filter	G128
33.	Dustbag (Reuseable)	G129
34.	Main canister	G252
35.	Castor wheel	G145
36.	Suction pedestal	G138
37.	Hose assembly complete	G32B
37a.	Bent hand piece	KC330
37b.	Hose cuff hull	KC300
37c.	Hose cup ring	KC310
38.	Wand	KC909/2
39.	Floor Tool	UA908W
40.	Crevice Tool	KC911
41.	Dusting Brush	KC910
42.	Upholstery tool	KC912
43.	Disposable Paper Bags	KC286