

*Nero*<sup>®</sup>

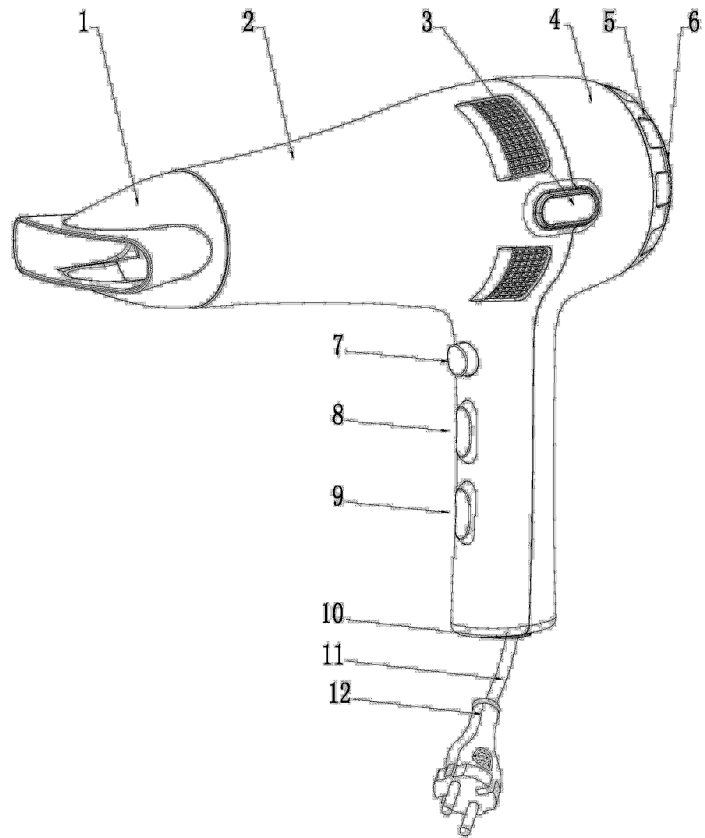
**7412001 RETRAK HAIR DRYER**

**INSTRUCTION MANUAL**



## KNOW YOUR PRODUCT

- 1、 Concentrator
- 2、 Front Housing
- 3、 Retract Button
- 4、 Rear housing
- 5、 Removable Cover
- 6、 Inlet Grille
- 7、 Cool Shot Button
- 8、 Heating Switch
- 9、 Speed Switch
- 10、 Cord Guard
- 11、 Power Cord
- 12、 Various Plug



## KEY

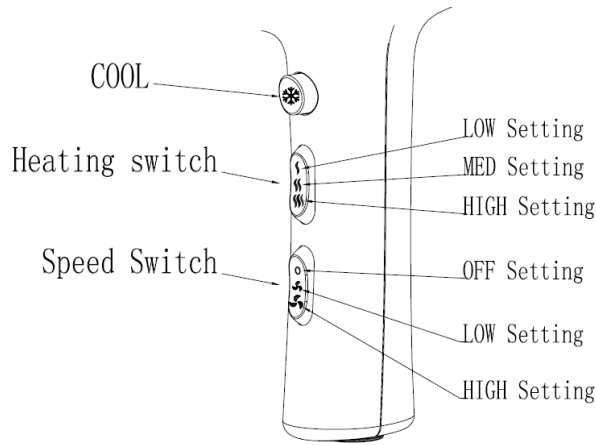
- Retract Power cord Function
- Rating: 220~240V 50Hz 1750~2100W
- Accessories: Concentrator
- Motor type: DC Motor
- Switch Function: Two speed and Three heating  
Cool shot Function
- Function option: Ionizer Function

## HOW TO USE

- Make sure that your hands are completely dry before plugging in.
- Plug in and set switch to the required position
- Once your hair is dry set the switch off( 0) and unplug the dryer.

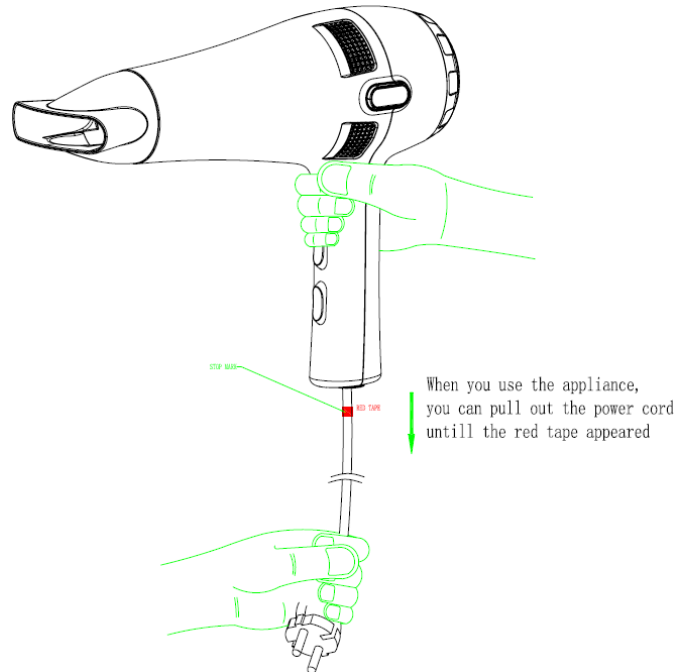
**·Switch use method**

- LOW-LOW Setting:
- LOW-MED Setting:
- LOW-HIGH Setting:
- LOW-COOL Setting
  
- HIGH-LOW Setting
- HIGH-MED Setting:
- HIGH-HIGH Setting:
- HIGH-COOL Setting

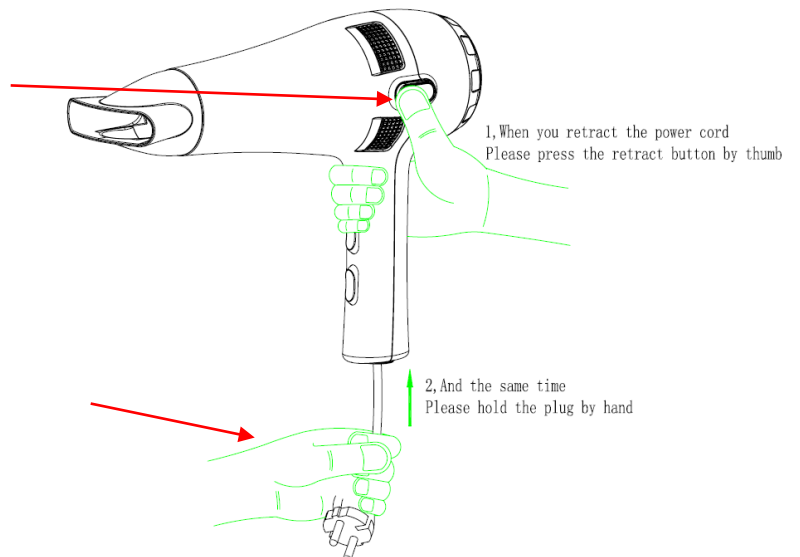


**·How to retract the power cord**

When you use the appliance,  
you can pull out the power cord  
Until the red tape appears



1, When you retract the power cord  
Please press the retract button by thumb



2, At the same time, please hold the plug by hand

2, And the same time  
Please hold the plug by hand

**SAFETY**

- Ensure that the air inputs and outputs are not blocked.

·If that does happen, thermal temperature limiter guards against overheating.

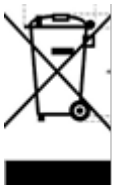
**WARNING:**

- (1) If the supply cord is damaged, it must be replaced by the manufacturer or one of its service agent/s or a qualified person in order to avoid a **hazard**.
- (2) This appliance is not intended for use by persons (including children) with reduced physical, sensory or mental capabilities, or lack of experience and knowledge, unless they have been given supervision or instruction concerning use of the appliance by a person responsible for their safety.
- (3) Children should be supervised to ensure that they do not play with the appliance.
- (4) When the hairdryer is used in a bathroom, unplug it after use since the proximity of water presents a hazard even when the hairdryer is switched off.
- (5) For additional protection the installation of a residual current device with a rated residual operating current not exceeding 30 mA is advisable in the electrical circuit supplying the bathroom. Ask your installer for advice
- (6) Never submerge or wet the dryer.
- (7) Do not use this appliance near water in bathtubs, basins or other vessels.

Correct Disposal of this product



(8) This marking indicates that this product should not be disposed with other household wastes throughout the EU. To prevent possible harm to the environment or human health from uncontrolled waste disposal, recycle it responsibly to promote the sustainable reuse of material resources. To return your used device, please use the return and collection systems or contact the retailer where the product was purchased. They can take this product for environmental safe recycling.



Nero is a registered trademark of  
R WEATHERDON & CO PTY LTD

Made in China

Backed by the Nero 12 month replacement warranty.

For more information contact  
R WEATHERDON & CO PTY LTD

Email: [sales@weatherdon.com.au](mailto:sales@weatherdon.com.au)

PH: +61 2 9906 2202

[www.weatherdon.com.au](http://www.weatherdon.com.au)